



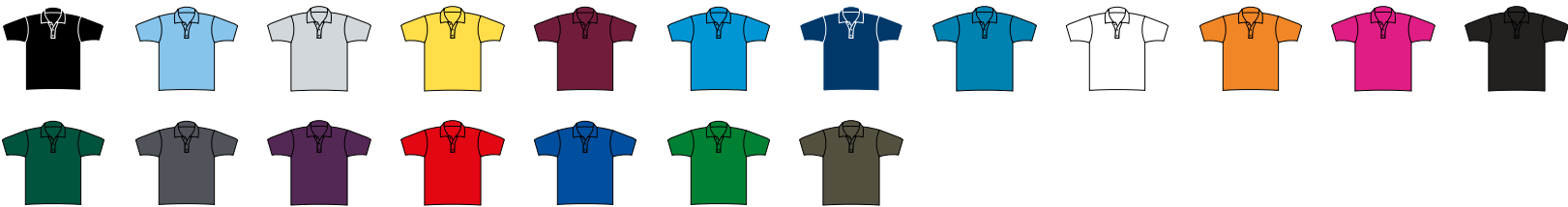
WORKWEAR



Pro RTX Pro Piqué Polo Shirt

Code RX101

- Ribbed collar.
- Taped neck.
- Three self colour button placket.
- Twin needle stitching.
- 60°C wash.
- Ladies available [RX101F](#)



PRO RTX Pro Premium Piqué Polo Shirt

NEW

Code RX110

- Ribbed collar and cuffs.
- Taped neck.
- Three self colour button placket.
- Taped side vents.
- Twin needle stitching.
- 60°C wash.



Russell Hardwearing Poly/Cotton Piqué Polo Shirt

Code 599M

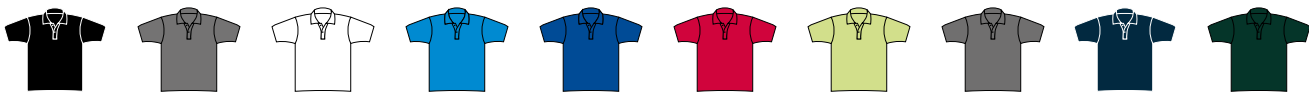
- Twin raised stripe detail on collar and cuffs. Taped neck.
- Two self colour button placket.
- Reinforced shoulder seams.
- Cuffed sleeves. Side vents.
- Twin needle hem.
- Domestic wash 60°C.



Kustom Kit Regular Fit Workforce Piqué Polo Shirt

Code K422

- 1x1 ribbed knit collar.
- Self fabric taped neck.
- Two button placket.
- Twin needle cuffs and hem.
- 60°C wash.
- Ladies available [K722](#)





Pro RTX Pro Polyester Polo Shirt

Code RX105

- Spun polyester piqué knit.
- Soft cotton feel fabric.
- Modern fit. Ribbed collar. Taped neck.
- Three self colour button placket.
- Spare button. Twin needle stitching.
- 60°C wash. Ladies available [RX105F](#)



Pro RTX Pro Long Sleeve Piqué Polo Shirt

Code RX102

- Ribbed collar and cuffs.
- Taped neck.
- Three self colour button placket.
- Twin needle stitching.
- 60°C wash.



**MORE COLOURS
AVAILABLE!**

Premier Coolchecker® Piqué Polo Shirt

Code PR615

- Easy care, moisture wicking fabric.
- Ribbed collar and cuffs.
- Three self colour button placket.
- Panelled detail for more fitted shape.
- Longer length. Side vents.
- Twin needle hem. Ladies available [PR616](#)



**MORE COLOURS
AVAILABLE!**

Henbury Coolplus® Wicking Piqué Polo Shirt

Code H475

- Coolplus® performance permanent wicking fabric draws moisture away from skin to keep you cool and dry.
- Easy care fabric. Flat knit collar.
- Taped neck. Locker patch.
- Two self colour button placket.
- Side vents. Twin needle stitching.
- 60°C wash. Ladies available [H476](#)

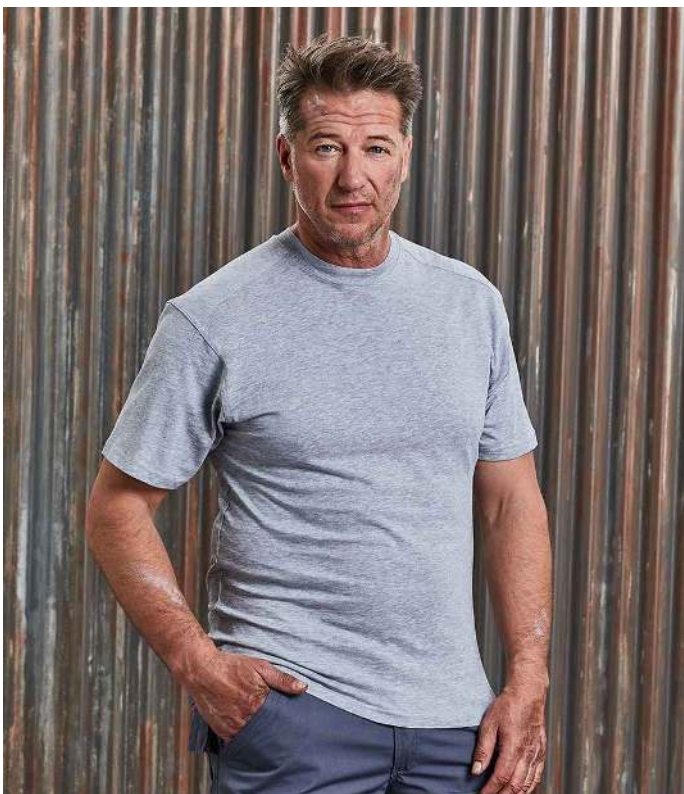
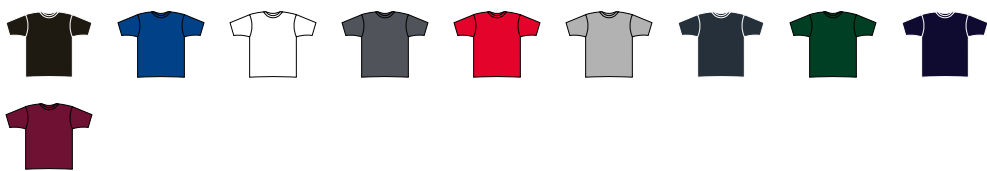




Pro RTX Pro T-Shirt

Code RX151

- Ribbed collar.
- Shoulder to shoulder taping.
- Side seams.
- Twin needle stitching.
- 60°C wash.



Russell Heavyweight T-Shirt

Code 010M

- Twin needle coverseamed ribbed neck trim.
- Self fabric taped neck.
- Double layer yoke and shoulder panels for durability.
- Twin needle armholes.
- Twin needle sleeves and hem.
- 60°C domestic wash.



PRO RTX Pro Long Sleeve T-Shirt

NEW

Code RX152

- Single jersey.
- Ribbed collar and sleeves.
- Taped neck and shoulders.
- Side seams.
- Twin needle stitching.
- 60°C wash.



**MORE COLOURS
AVAILABLE!**

SOL'S Imperial Heavy T-Shirt

Code 11500

- Ribbed collar.
- Taped neck.
- Tubular body.
- Twin needle stitching.
- Ladies available [11502](#)





Pro RTX Pro Hoodie

Code RX350

- Modern fit.
- Lined hood.
- Self colour adjustable drawcord.
- Front pouch pocket.
- Ribbed cuffs and hem.
- Twin needle stitching.
- 60°C wash.

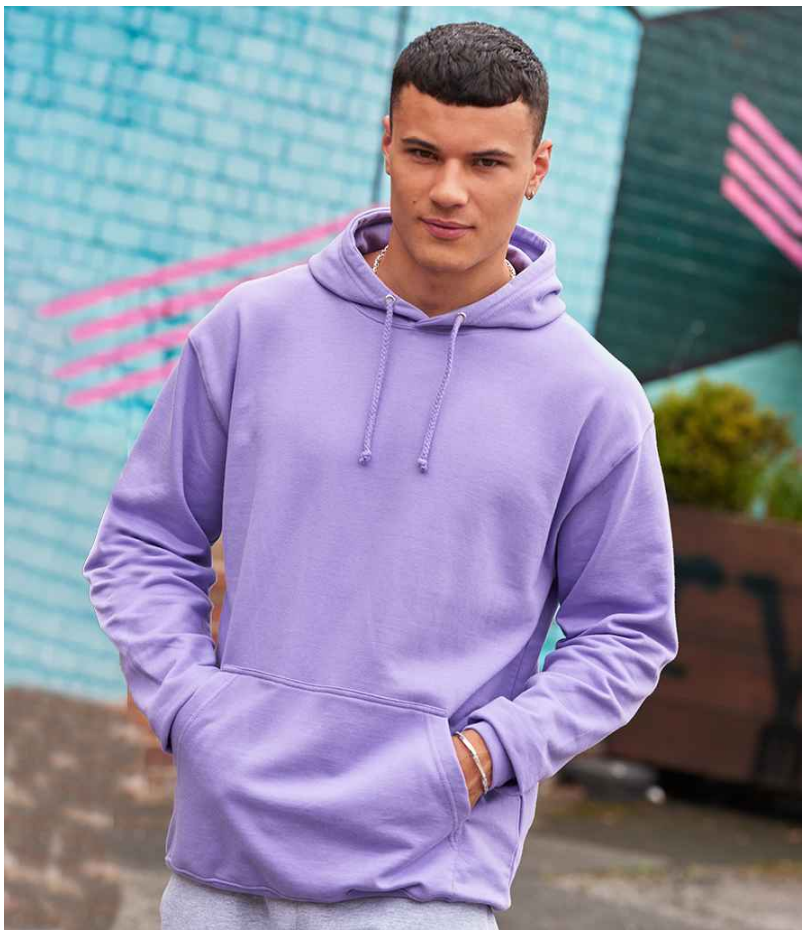


PRO RTX Pro Zip Hoodie

NEW

Code RX351

- Brushed back fleece.
- Modern fit.
- Lined hood.
- Self colour adjustable drawcord.
- Full length YKK zip.
- Front pouch pockets.
- Ribbed cuffs and hem.
- Twin needle stitching.
- 60°C wash.



AWDis College Hoodie

Code JH001

- Soft cotton faced fabric.
- Brushed back fleece.
- Drop shoulder style.
- Double fabric hood with self colour drawcord.
- Front pouch pocket.
- Ribbed cuffs and hem.
- Twin needle stitching.
- Ladies available [JH001F](#)

**MORE COLOURS
AVAILABLE!**





Pro RTX Pro Sweatshirt

Code RX301

- Drop shoulder style.
- Modern and comfortable fit.
- Ribbed collar, cuffs and hem.
- Taped neck.
- Twin needle stitching.



Russell Heavyweight Sweatshirt

Code 013M

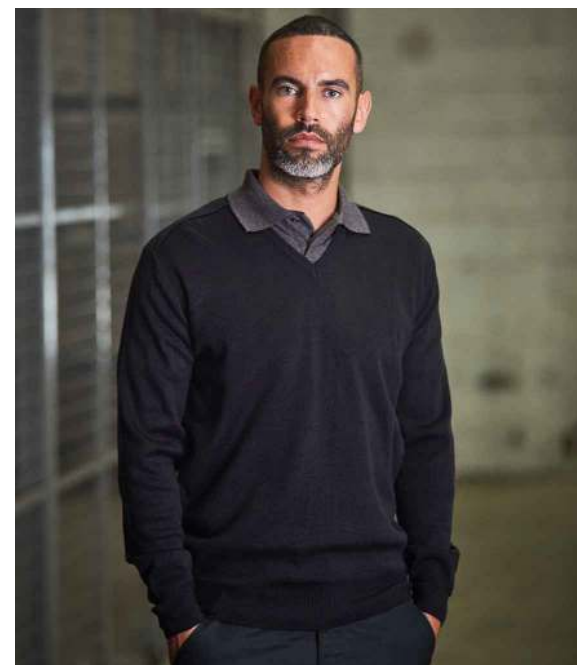
- SpotShield™ stain resistant coating.
- Drop shoulder style.
- 1x1 ribbed collar and cuffs with elastane.
- Taped neck. Locker patch.
- Double layer fabric shoulders for durability.
- Elasticated pen holder on sleeve.
- Ribbed bound open hem. Drop hem.
- Suitable for 60°C domestic wash.



Pro RTX Pro Acrylic Security V Neck Sweater

Code RX220

- 5 gauge.
- Elbow patches 65% polyester/35% cotton.
- Modern unisex styling. Ribbed knit neck.
- Tear release epaulettes on shoulders.
- Left sleeve pen pocket.
- Ideal for security applications.



Pro RTX Pro Acrylic V Neck Sweater

Code RX200

- 10 gauge.
- Modern unisex styling.
- Set in sleeves.
- Fashioned V neck.
- Saddle shoulders.
- Ribbed knit neck, cuffs and hem.





Pro RTX Pro Fleece Jacket

Code RX402

- Modern unisex style. Unlined.
- Collar high full length zip.
- Two front zip pockets.
- Elasticated cuffs.
- Adjustable drawcord hem.
- Twin needle stitching.
- 60°C wash.



Russell Outdoor Fleece Jacket

Code 870M

- Anti-pill, dense, compact pile fleece.
- Unlined.
- Full length zip.
- Two front zip pockets.
- Hemmed cuffs.
- Adjustable drawcord hem.
- Ladies available [870F](#).



Result Work-Guard Heavy Duty Micro Fleece

Code RS330

- Hang tag.
- Stand up collar.
- Heavy duty full length zip with interchangeable colour zip pulls.
- Two front zip pockets.
- Black elasticated bound cuffs and hem.
- Branding to bottom left hem.



Regatta Sigma Heavyweight Fleece Jacket

Code RG128

- Unlined.
- Taped neck.
- Locker patch.
- Raglan sleeves. Full length zip.
- Two front zip pockets. Fleece cuffs.
- Open hem with adjustable drawcord.
- Interactive style.

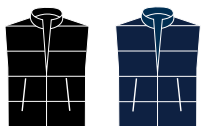




Pro RTX Pro Bodywarmer

Code RX551

- Polyester 190T taffeta padding.
- Showerproof. Fleece lined stand up collar.
- Back neck hanging loop.
- Full length zip with chin guard and inner zip guard. Two inner chest pockets.
- Two front zip pockets. Drop back hem.



Pro RTX Two Layer Soft Shell Gilet

Code RX550

- 97% polyester/3% elastane outer.
- Showerproof and windproof.
- Relaxed fit.
- Full length zip with chin guard and inner zip guard. Two front zip pockets.
- Adjustable drawcord hem.



Russell Gilet

Code 014M

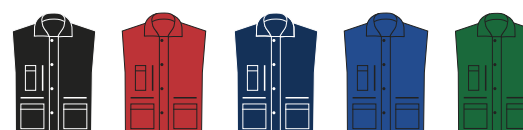
- Stain resistant DuPont™ Teflon® coating.
- Polyester padding. Polyester lining.
- Full length zip with storm flap.
- Elasticated gusset at armholes for comfort.
- Left chest large zip pocket.
- Right chest pocket with multiple compartments. Two front zip pockets.
- Large internal A4 document pocket.
- Curved back hem.
- Suitable for 60°C domestic wash.



Result Work-Guard Lance Bodywarmer

Code RS127

- Polyester padding and lining.
- Showerproof and windproof.
- Full length zip with studed storm flap.
- Deep elasticated armholes.
- Two triple access front pockets, chest pocket, media and inner pockets.
- Small elasticsation at hips.
- Curved back hem.





Pro RTX Pro Two Layer Soft Shell Jacket

Code RX500

- Showerproof and windproof.
- Full length zip with chin guard and inner zip guard.
- Two front zip pockets.
- Adjustable cuffs and hem.



Regatta Sandstorm Soft Shell Workwear Jacket

Code RG158

- Polyester fleece backed.
- Hardwearing with ATL durable water repellent finish.
- Durazone polyamide overlays at wear points for added strength and durability.
- Full length zip. Right chest zip pocket.
- Two front zip pockets. Adjustable cuffs and hem.



Russell Soft Shell Workwear Jacket

Code 018M

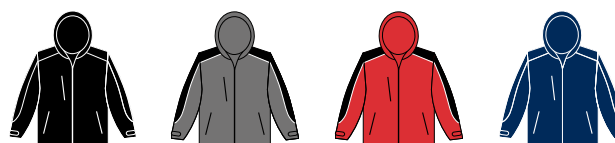
- Textured polyester micro fleece backed.
- Waterproof 5000mm and breathable 5000g membrane.
- Durable showerproof DuPont™ Teflon® coating.
- Full length YKK zip.
- Contrast panels on shoulders, elbows and back of hem.
- Multiple pockets.
- Adjustable drawcord hem.



Result Work-Guard Hooded Soft Shell Jacket

Code RS118

- Waterproof 8000mm, breathable 1000g and windproof TPU membrane.
- Polyester micro fleece inner layer.
- Contrast ripstop shoulders and arm scuff panels.
- Concealed hood.
- Full length zip.
- Zip underarm vents.
- Multiple pockets.
- Adjustable cuffs and hem.





Regatta Dover Waterproof Insulated Jacket

Code RG045

- 220 series anti-pill Symmetry® fleece lining. Polyamide sleeve lining. Thermo-Guard® insulation.
- Waterproof and windproof.
- Concealed adjustable lined hood.
- Full length zip with tear release storm flap.
- Multiple pockets.
- Part elasticated cuffs and hem.
- [Ladies available RG074.](#)



Result Work-Guard Sabre Pilot Jacket

Code RS300

- 190T polyester taffeta diamond quilted lining.
- Polyester padding.
- Waterproof and windproof.
- Full length zip.
- Micro fleece lined stand up collar.
- Multiple pockets.
- D-ring.
- Elasticated ribbed cuffs and hem.
- Includes four coloured zip pulls.



Portwest DX4™ Baffle Jacket

Code PW4471

- Insulatex lining.
- Full length zip with chin guard.
- Reflective piping on back yoke.
- Two contrast chest zip pockets.
- Two inner pockets.
- Two contrast front zip pockets.
- Bound cuffs.
- Drawcord hem.
- Branding on zip pulls, left hem and lower right side seam.
- Notepad included.

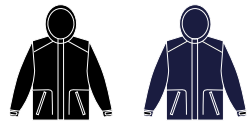




Regatta Hudson Waterproof Insulated Jacket

Code RG042

- 210 series anti-pill Symmetry® fleece lining to collar and body.
- Polyester lined sleeves.
- Thermo-Guard® insulation.
- Waterproof with taped seams. Windproof.
- Concealed adjustable hood. Collar high full length zip with inner zip guard.
- Two front zip pockets.
- Inner pocket and media pocket.
- Stud side adjusters. Adjustable cuffs.
- [Ladies available RG043.](#)



Result Work-Guard Sabre Long Coat

Code RS301

- Polyester padding. 190T polyester taffeta diamond quilted lining.
- Waterproof and windproof.
- Concealed adjustable hood.
- Micro fleece lined stand up collar.
- Full length zip with tear release storm flap.
- Left chest pocket. Multi-feature right chest pocket. Left sleeve pocket. Inner pocket. Deep front patch pockets with tear release closure and reflective trim.
- D-ring.
- Elasticated adjustable cuffs.
- Includes four coloured zip pulls.



Result Work-Guard Elevator Jacket

Code RS314

- Polyester padding and lining.
- Knitted polyester back and sleeves.
- Brushed inner.
- Super stretch fabric and seams allow for natural movement.
- Stand up collar.
- Full length YKK zip with chin guard.
- Interchangeable colour zip pulls.
- Two front zip pockets.
- Inside zip pocket.
- Bound cuffs and hem.

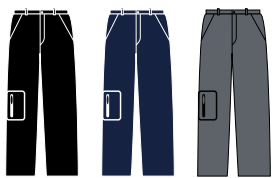




Russell Work Trousers

Code 001M

- Extendable waistband with belt loops.
- Zip fly with stud button over.
- Two side pockets.
- Rear pockets with flaps.
- Media pocket.
- Cargo pocket on right leg.



Result Work-Guard Action Trousers

Code RS308

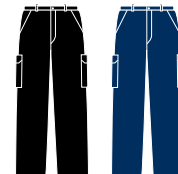
- Windproof and breathable.
- Expandable waistband with belt loops.
- Zip fly with button over.
- Handwarmer side pockets.
- Cargo pockets on both legs.
- Media pocket. Hammer loop.
- Knee pad pockets.
- Critical stress point bar tacking.
- Twin needle stitched seams.
- 2" hem.
- Ladies available [RS308F](#).



Warrior Cargo Trousers

Code HL210

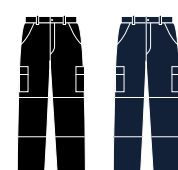
- Traditional waistband - extendable at hip points.
- Belt loops.
- Zip fly with button over.
- Two side pockets.
- Rear concealed button pockets.
- Two side leg tear release cargo pockets.
- Ladies available [HL215](#).



Pro RTX Pro Workwear Cargo Trousers

Code RX600

- Traditional waistband with belt loops.
- Concealed zip fly with button over.
- Two side swing pockets.
- Rear open pocket.
- Two closed cargo pockets on both legs.
- Knee pad pockets with tear release closure.

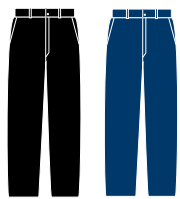




Pro RTX Pro Workwear Trousers

Code RX601

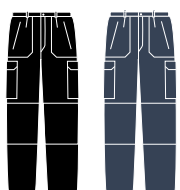
- Traditional waistband with belt loops.
- Concealed zip fly with button over.
- Two side swing pockets.
- Rear open pocket.



Portwest Action Trousers

Code PW101

- UPF rating of 50+.
- Belt loops.
- Zip fly with hook and bar over.
- Reinforced seat and knees.
- Two side zip pockets and two rear zip pockets.
- Two side patch pockets and two zip pockets with slanted entry.
- Right leg pocket with tear release closure.
- Knee pad pockets.
- Ladies available [PW707](#).



Regatta Pro Cargo Holster Trousers

Code RG720

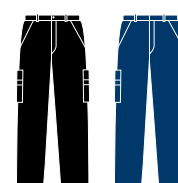
- Part elasticated waistband with belt loops. Zip fly with button over. Two fold away multi-use holster pockets. Two side pockets. Two rear pockets with button down flaps.
- Left leg ruler pocket. Right thigh pocket.
- Hammer loop. D-ring attachment.
- Knee pad pockets, available separately RG282.



Portwest Combat Trousers

Code PW125

- UPF rating of 50+.
- Belt loops.
- Zip fly with concealed button over.
- Two side slant entry pockets.
- Rear patch pockets.
- Two side leg pockets.





Russell Workwear Poly/Cotton Shorts

Code 002M

- Extendable waistband with belt loops.
- Zip fly with stud button over.
- Two side pockets.
- Rear pockets with flaps.
- Cargo pocket on right leg.
- Media pocket.



Result Work-Guard Action Shorts

Code RS309

- Windproof.
- Expandable waistband with belt loops.
- Zip fly with button over.
- Handwarmer side pockets.
- Rear pockets. Cargo pockets on both legs.
- Hammer loop.
- Critical stress point bar tacking.
- Twin needle stitched seams.



Regatta Action Shorts

Code RG234

- Water repellent finish.
- Part elasticated waistband with belt loops.
- Zip fly with button over.
- Two large side pockets with hem bellows.
- Rear pockets - right with zip.

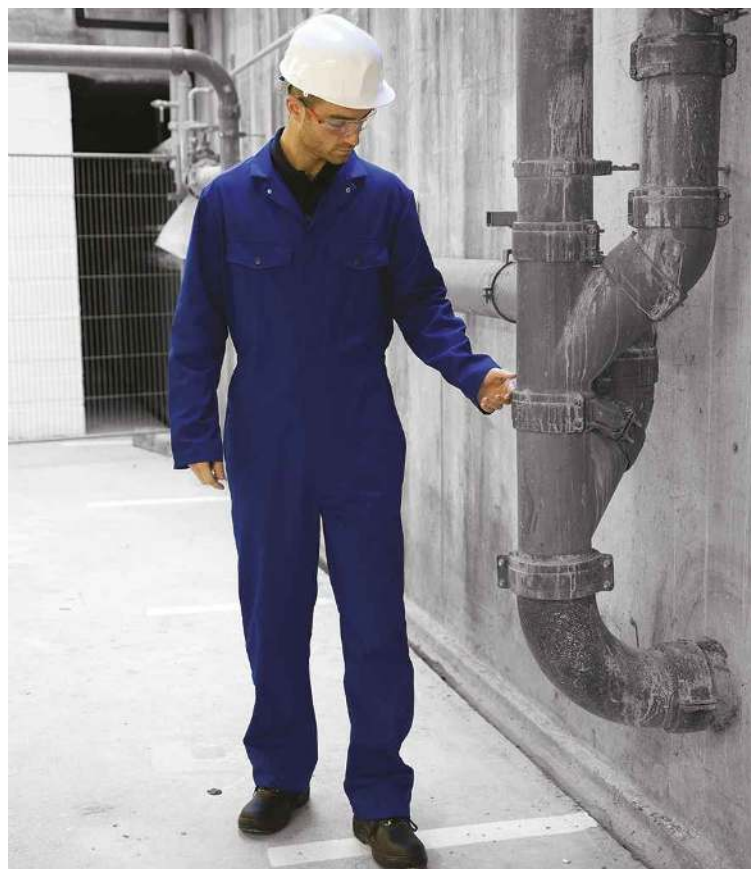


Pro RTX Pro Cargo Shorts

Code RX605

- Traditional waistband with belt loops.
- Zip fly with button over.
- Two side pockets.
- Rear patch pocket.
- Two side leg cargo pockets with flaps.





Warrior Stud Front Coverall

Code DV002

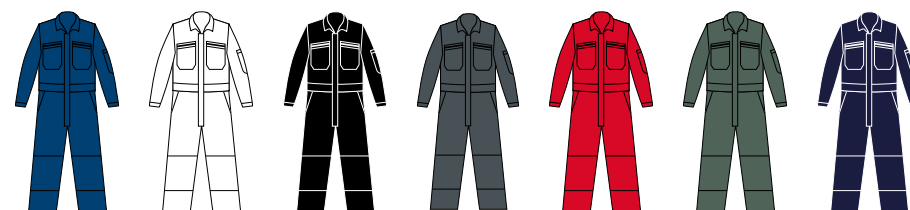
- Concealed stud front.
- Two mitred chest pockets with stud flap closure.
- Two swing pockets with side access.
- Full back elasticsation and an action back.
- Rear mitred patch pocket.
- Right leg ruler pocket.



Regatta Pro Zip Front Coverall

Code RG724

- Concealed front zip.
- Two chest zip pockets.
- Left sleeve pocket.
- Side elasticated waistband.
- Two side pocket openings.
- Two rear pockets, one patch, one zipped.
- Tear release adjustable cuffs.
- Reinforced crotch seam.
- Left leg ruler pocket.
- Knee pad pockets, available separately RG282.



Portwest Bizweld™ Flame Resistant Coverall

Code PW452

- Conforms to EN ISO 11612 A1 + A2, B1, C1, E2, F1.
- EN ISO 11611 class 1, A1 + A2.
- ASTM F1959/F1959M-12 APTV=11.2 CAL/CM2.
- Flame resistant finish.
- UPF 50+.
- Concealed stud front.
- Two chest pockets with stud flap closure.
- Radio loop.
- Stud adjustable cuffs.
- Ruler pocket.
- Branding on left sleeve.





Portwest Classic Rain Jacket

Code PW166

- Waterproof 5000mm with taped seams.
- Fold away hood with drawcord.
- Full length zip with inner zip guard.
- Underarm eyelets.
- Two front pockets.
- Inner elasticated storm cuffs.
- Drawcord hem.
- Branded woven tab on right side seam.
- Co-ordinates with Trousers [PW167](#)



Regatta Pro Packaway Waterproof Breathable Jacket

Code RG213

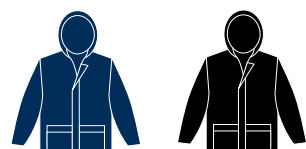
- Waterproof with taped seams.
- Windproof and breathable.
- Integral adjustable hood.
- Full length low profile zip with chin guard and inner storm flap.
- Two front zip pockets.
- Elasticated cuffs.
- Adjustable drawcord hem.
- Packs away into stuff sack.
- Co-ordinates with Trousers [RG214](#)



Result Core Waterproof Over Jacket

Code RS227

- Waterproof 2000mm with taped seams.
- Windproof.
- Concealed hood.
- Full length zip with studded storm flap.
- Mesh ventilation panel on back.
- Inner elasticated cuffs.
- Adjustable drawcord hem.
- Co-ordinates with Trousers [RS226](#)





Warrior Waterproof Metal Free Boot

NEW

Code WR109

- EN ISO 20345: 2011 SRC S3 WR.
- Water resistant leather upper.
- Moisture wicking lining. Glass fibre toe cap. Composite midsole. Dual density PU sole. Abrasion and slip resistant. Fuel and oil resistant outsole. Shock absorbing heel. Replaceable, full length cushioned insock. Anti-static. Padded mesh collar. Metal free.



Result Work-Guard Stirling Safety Boots

Code RS459

- Mesh lined. Water resistant.
- EN ISO 20345: 2011 S3 SRC.
- Lightweight. Composite toe cap.
- Composite midsole for underfoot protection.
- SRC slip resistance. Oil resistance.
- Energy absorption heel. Anti-static.
- Padded ankle support. Heel loop.



Portwest Steelite™ Lusum S1P HRO Safety Trainers

NEW

Code PW809

- EN ISO 20345: 2011 SRA S1P HRO.
- Steel toe cap (200 Joules). Steel midsole. Dual density sole unit.
- EVA/rubber outsole. SRA slip resistant.
- Fuel, oil and heat resistant outsole.
- Energy absorbing seat region. Anti-static.



Portwest Endurance Safety Hard Hat

Code PW039

- Conforms to EN397 LD, 440v.
- EN50365 class: 0.
- Constructed using high-density polypropylene.
- Suspension harness with foam sweatband, rain gutter and ear protector slots.
- Adjustable 55-62cm.



Knee Pads, Gloves & more also available



Pro RTX High Visibility Polo Shirt

Code RX710

- Conforms to EN ISO 20471: 2013 + A1: 2016 class 2. RIS-3279-TOM (orange/navy only).
- Lightweight breathable birdseye fabric.
- Contrast ribbed collar. Contrast three button placket. Two reflective bands on front, back and one over each shoulder.
- Side vents. Twin needle stitching.



Warrior Hi-Vis Pull On Hoodie

NEW

Code WR012

- Conforms to EN ISO 20471: 2013 + A1: 2016 class 3.
- RIS-3279-TOM (orange only).
- Drop shoulder style. Double fabric hood with self colour drawcord. Front pouch pocket. Right chest zip pocket.
- Two reflective bands around the body, sleeves and one over each shoulder.
- Elasticated cuffs and hem.



Pro RTX High Visibility Two Tone Sweatshirt

Code RX730

- Conforms to EN ISO 20471: 2013 + A1: 2016 class 3. RIS-3279-TOM (orange/navy only).
- Brushed back fleece. Drop shoulder style.
- Contrast ribbed collar, cuffs and hem.
- Two reflective bands around the body, sleeves and one over each shoulder.



Yoko Hi-Vis Pull Over Hoodie

Code YK031

- Anti-pill single jersey knitted soft feel fabric.
- Conforms to EN ISO 20471: 2013 + A1: 2016 class 3. RIS-3279-TOM (orange and orange/navy only). Black and navy provide enhanced visibility.
- Drop shoulder style. Two panel hood with grey contrast drawcord. Taped neck.
- Two reflective bands around the body, sleeves and one over each shoulder.
- Front pouch pocket. Ribbed cuffs and hem.





Pro RTX High Visibility Cargo Trousers

Code RX760

- Yellow/navy and orange/navy conform to EN ISO 20471: 2013 + A1: 2016 class 1. RIS-3279-TOM (orange/navy only). Navy provides enhanced visibility.
- Water repellent finish.
- Part elasticated waistband with belt loops.
- Zip fly with button over.
- Two side pockets. Rear tear release pocket.
- Two side leg cargo pockets with reflective tape.
- Inner knee pad pockets.
- Two reflective bands around lower legs.



Yoko Hi-Vis Two Band and Braces Waistcoat

Code YK102

- Tear release front closure. Bound edges - solid colours have self colour, two tone have contrast.
- Two reflective bands around the body and one over each shoulder.
- Solid yellow, solid orange, yellow/orange conform to EN ISO 20471: 2013 + A1: 2016 class 2. Black, navy, paramedic green and yellow/royal blue conform to EN ISO 20471: 2013 + A1: 2016 class 1. All other colours provide enhanced visibility in all kinds of environments.



**MORE COLOURS
AVAILABLE!**

Warrior Hi-Vis Motorway Jacket

NEW

Code WR025

- Conforms to EN ISO 20471: 2013 + A1: 2016 class 3.
- EN343: class 3 and EN343 class 1.
- RIS-3279-TOM (orange only).
- Showerproof.
- Concealed hood (orange is detachable).
- Studded storm flap closure.
- Two reflective bands around the body, sleeves and one over each shoulder.
- Right chest media pocket.
- Inner chest pocket.
- Two front pockets with flaps.
- Inner wicking strip to hem.





Yoko Hi-Vis Classic Bomber Jacket

Code YK200

- Nylon diamond quilted lining with polyester padding.
- Yellow and orange conform to EN ISO 20471: 2013 + A1: 2016 class 3 and EN343. RIS-3279-TOM (orange only).
- Waterproof with taped seams. Windproof.
- Concealed hood. Full length heavy duty zip with studded storm flap.
- Two reflective bands around the body, sleeves and one over each shoulder.
- Right chest media pocket. Inner patch pocket.
- Two front pockets with flaps.
- Elasticated cuffs. Part elasticated hem.



Portwest Hi-Vis Bomber Jacket

Code PW001

- Quilted nylon lining and polyester padding.
- Conforms to EN ISO 20471: 2013 + A1: 2016 class 3, EN343: class 3:1. EN342 0.336m² K/W, 2, X.
- Waterproof with taped seams.
- Stain resistant finish.
- Concealed adjustable hood. Fleece lined collar.
- Full length two way zip with studded storm flap.
- Two reflective bands around the body, sleeves and one over each shoulder.
- Two front pockets. Zip security pocket and inner pocket.
- Inner ribbed storm cuffs. Part elasticated hem.



Pro RTX High Visibility Bomber Jacket

Code RX770

- Polyester padding and diamond quilted taffeta lining.
- Conforms to EN ISO 20471: 2013 + A1: 2016 class 3.
- RIS-3279-TOM (orange only).
- Waterproof with taped seams.
- Concealed adjustable hood.
- Full length zip with studded storm flap.
- Two reflective bands around the body, sleeves and one over each shoulder.
- Two front pockets.
- Inner pocket.
- Elasticated cuffs and hem.

